

Caring together

Eastern Cheshire

Overview and Scrutiny Committee
Wednesday 6th July 2016

Fleur Blakeman, Strategy and Transformation Director , Eastern Cheshire CCG

Integrating Care in Eastern Cheshire

Contents

- A quick recap on Caring Together
- Achievements 2015/16
- Progress to date 2016/17
- Process for developing Care Models for 2016/17 priorities

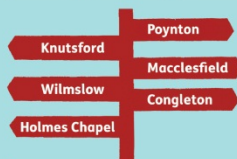
1 IN 5 PEOPLE ARE OVER 65 IN EASTERN CHESHIRE



More than one in five people in Eastern Cheshire are over 65, which is higher than the national average, and this will be nearer to one in four people by 2021

20% OF EASTERN CHESHIRE POPULATION CURRENTLY USE

70% OF LOCAL HEALTH AND SOCIAL CARE RESOURCES



LIFE EXPECTANCY IS BETTER THAN THE ENGLAND AVERAGE

But there are large variations between and within our towns

21,000 CARERS LIVE IN EASTERN CHESHIRE



If carers are not supported, they are likely to become unwell. This has an impact on whoever they are caring for



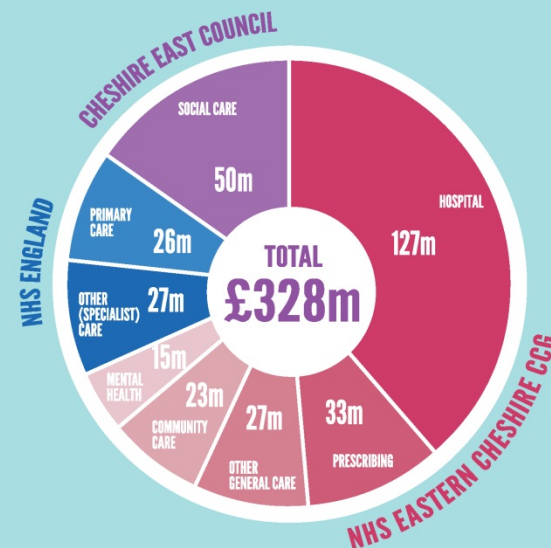
22,000 BED DAYS COULD BE AVOIDED

Over 22,000 bed days per year (at an estimated cost of £5.5m) in Macclesfield District General Hospital could be avoided

OVER 1/3 WAIT TOO LONG FOR A GP APPOINTMENT

Over a third of people in Eastern Cheshire say they have to wait too long to see their GP

FUNDING CHALLENGE



Eastern Cheshire health care spend £m (2012/13)

If demand for care services continues at the current rate there will be a financial shortfall in Eastern Cheshire of nearly £80m by 2018/19



Vision and values

Joining up local care for all our wellbeing

VISION



Self Care

Promote self-care and self-management, health promotion, individual responsibility

House of Values

Empowerment



Collaboration



Innovation



For care staff,
joined-up care means
"Supporting people to
live well. By supporting
people to access
joined-up care when it
is needed we support
them to stay well."

For service users and carers,
joined-up care means

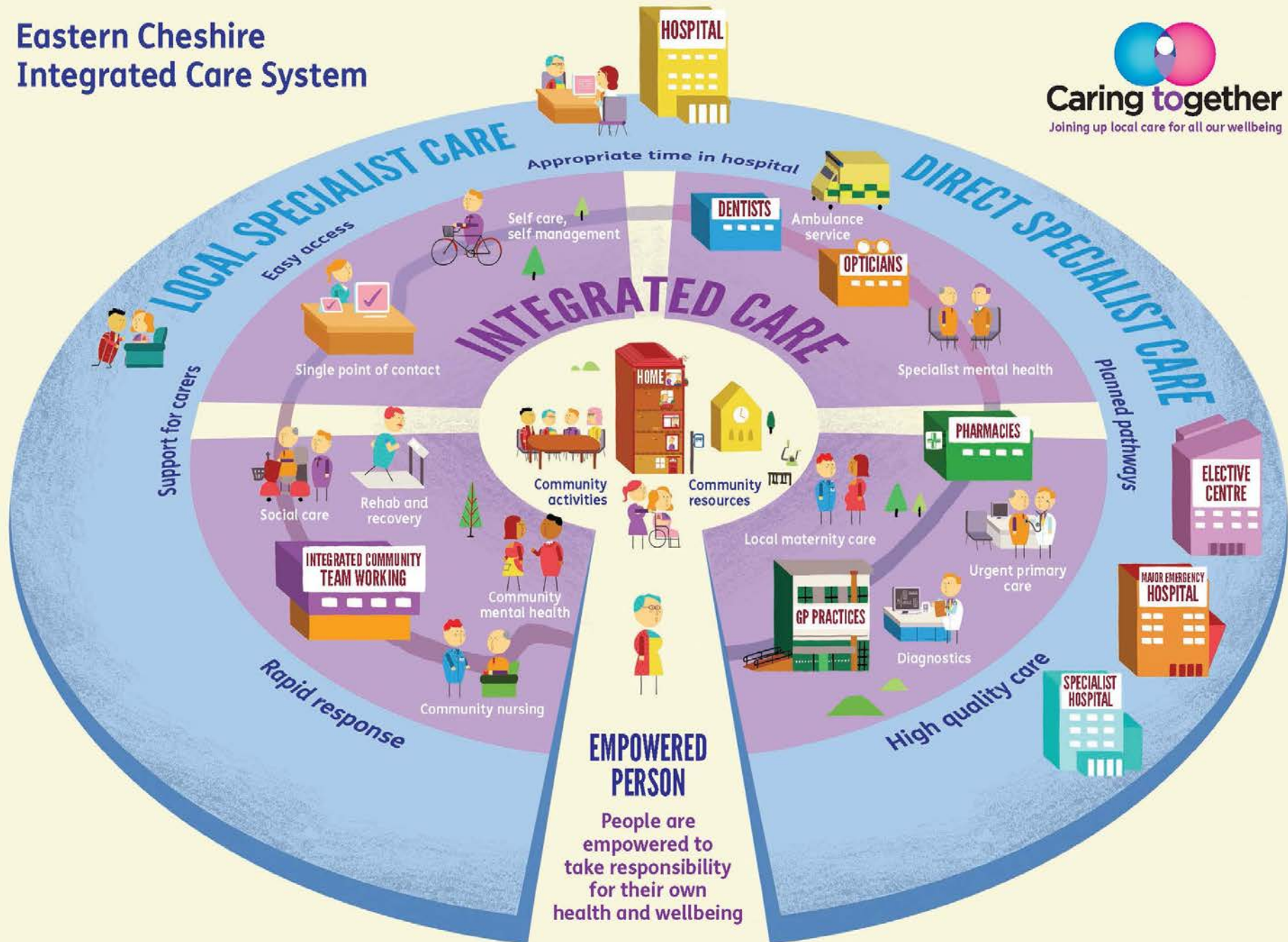
"I am supported to live well and stay
well because I can access joined-up
care and support when I need it."

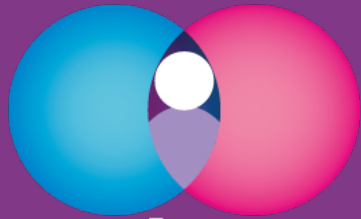
What does
this mean
for me?

Joined-up care



Eastern Cheshire Integrated Care System





Caring together

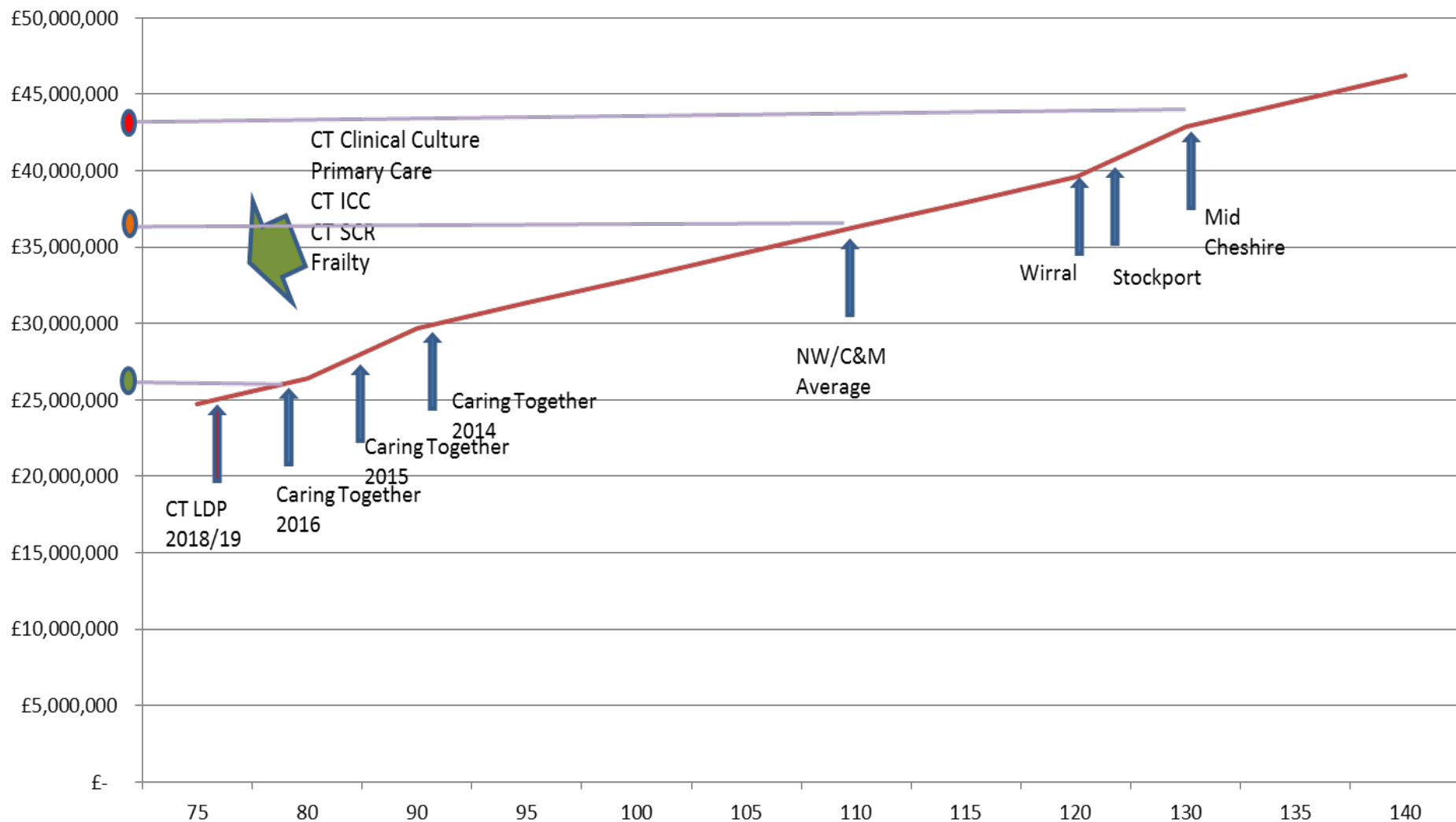
2015/16

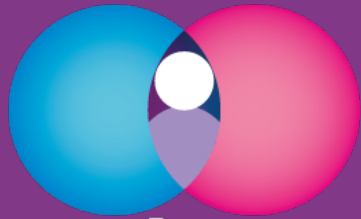
Integrating Care in Eastern Cheshire

Achievements 2015/16

- Equity of access to and expansion of services in primary care commenced January 2016
- Proactive care and risk stratification, targeted at top 2% of the at risk population
- Commenced Frailty Service September 2015
- Reactive community response introduced September 2015

NEL Costs as a function of NEL admissions /1000 population (Avg £1650/NEL admission)





Caring together

2016/17

Integrating Care in Eastern Cheshire

2016/17 progress to date

- Continued development of the community based coordinated care business case
- Implementation of Integrated Community Teams (without additional resources)
- Single point of access for reactive community services
- Shared Care Record goes live 1 July 2016
- Ramp up of Primary Care contract from April 2016 to be fully implemented by December 2016
- Caring Together priorities for 2016/17 agreed:
 - Maternity Care
 - Children's Health and Wellbeing services
 - Integrated Urgent and Community Care
 - Specialised Services

Caring Together: Process for developing care models for 2016/17 priorities

DRAFT

